

e-chain systems® and chainflex® cables

cranes

safe power...safe data...safe operation...
helping you save money...

● plastics for longer life®

igus.com

www.igus.com/cranes

ECS-B19

Cost down ... life up!

Improve technology and reduce costs!

Optimize your application technologies with new innovations, designed to improve operations and save money. With more than 50 years of experience in the field of engineered plastic components, igus® has equipped more than 10,000 port machinery applications.

All of our products are tested under realistic conditions in the largest test lab of its kind, located at igus® headquarters in Cologne, Germany. Nearly all igus® parts are available from stock, and ready to ship as early as the same day.

Learn more on our industry page at www.igus.com/cranes. Find detailed product information, helpful online tools, and order online. Please contact me with any questions about cable management for your next crane application.

I hope to hear from you soon!



Sean McCaskill
Engineered Systems
Product Manager
smccaskill@igus.com



Shipping in 24 hours*

Most orders leave igus® within 24 hours. On request we can deliver via express or special delivery. Please inform us about your wishes.



No minimum order

igus® requires no minimum order. Just order the amount you need.



With warranty

Beyond the legal warranty we also vouch for wear and tear. Together with you, we define your application's parameters for a warranty certificate!



igus® catalogs

Order igus® catalogs online
www.igus.com/catalog



Ordering times

From Mon to Fri 8:00 am - 6:00 pm EST



Hotline

Phone 800-521-2747
Fax 401-438-7270



Shop online

See www.igus.com. There you can find our complete product range.

Location: Malaysia
Travel: 65.6 (20 m)
Speed max.: 197 ft/min (60 m/min)
Acceleration max: 1.31 ft/sec² (0.4 m/sec²)

e-chain®: 400-25-250-0
chainflex® types: CF300 / CF9 / CF11



igus® products in cranes...

Where to find igus®



Quiet and wear-resistant,
for high speeds:
System P4
► page 12



Special solutions
for long travels:
rol e-chains®
► from page 10



For long travels
and side-mounted
applications:
System E4/4
► page 8



More than 1,000 cable
types: chainflex®
► page 16



Harnessed cables and
e-chains®:
ReadyCable and readychain®
► page 18

indoor and outdoor



Remote force
monitoring for heavy
duty units:
PPDS Systems
► page 19



Power-Protective-
System with
misalignment control:
E-Rover
► page 21



Safe guide for e-chains®
on long travels:
guide troughs and
Aluminum Super Trough
► page 15



Save cost

Benefits of e-chain systems®: Reduce costs. Increase service life.



No loop station required – igus® e-chain system® example on an STS crane in Antwerp (system delivered as readychain®).

Installed on more than 3,500 RTG/RMG's, over 700 STS cranes, and more than 8,000 additional applications including spreaders, main power supply, reach stackers, lifts, empty container handling systems and fork lifts

- Speeds up to 1,968 ft/min (600 m/min) possible: bulk-handling cranes and STS crane applications with 984 ft/min (300 m/min) in use
- Space-saving design reduces cable length and height requirements
- No additional drives or control systems necessary
- All media in one system – power, data, air, water, etc.
- Low maintenance
- Wind and weather resistant
- Other lines and cables can be added easily (e.g. chainflex® fiber optics)
- Possible travel up to 2,625 ft. (800m) with igus® rol e-chain®, applications with 1,641 ft. (500 m) on STS cranes travels in use
- Possible reduction of cable length > 50%
- No loop station required
- Overall steel structure can be shortened

Many years experience

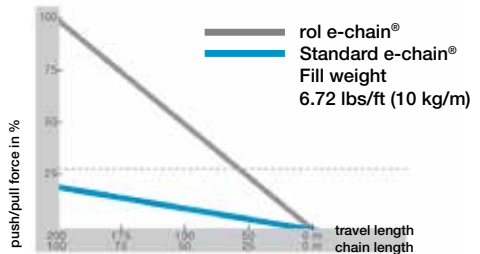
Higher fill weights with rol e-chain® extension links

- On more than 1,000 cranes with more than 10 years market experience
- The optimal solution for high additional loads
- Low maintenance
- Reduction of the driving force required for moving the e-chain® by up to 75%
- Travels up to 2,625 ft (800 m) possible
- Possible speeds of up to 1,968 ft/min (600 m/min)
- Different types of rollers for optimum results in different situations
- Even rolling resistance for dirty applications
- System guarantee for engineered systems (depends on application)

Traditional e-chains® operating over long distances generally slide on themselves. rol e-chain® has been developed with the aim of pushing back the technical limits of this kind of operation. The demands placed on e-chains® used over long distances have continuously increased in recent years. Travel over several hundred feet creates new challenges, as do extreme crane movement speeds at cable loads of up to 33.6 lbs/ft (50 kg/m).



1446 ft. (441 m) – one of the longest travels of igus®.
Travels up to 2,624 ft. (800 m) possible



Safe operation with igus® rol e-chain®



Test rig for lifetime test

e-chain® for cranes

E4/4: The E4 family for long travels and side-mounted applications



System E4/4

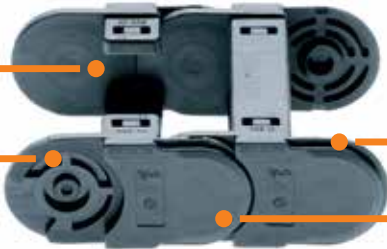
Designed for extreme long travels and unsupported side-mounted applications. The tongue and groove design feature increases tensile strength and provides protection in high dirt and debris areas. This e-chain® has roller links available.

- Best unsupported lengths in side-mounted applications
- rol e-chain® links available
- For very long travels up to 492 - 820 ft. (150 - 250 m)
- High torsional rigidity
- Good for tough environments with dirt and debris
- ESD Version available
- Interior separation accessories available

Typical Crane applications:
STS, Goliath cranes, RTG's, RMG's, Indoor cranes,
Bulk-handling cranes, ...

Material igumid G
-40/+248°F

Rugged stop-dog



Lateral glide surfaces

Outer link with rear catch - for increased stability

... for all cases

Construction kit and many accessories

Interior separations for cables and hoses



- Standard separator, wide foot
- Separator for QuickLock crossbar
- Separator, narrow foot
- Asymmetrical separator
- Notch separator the new notch crossbar
- Lockable, full-width shelf

Mounting brackets



- KMA with attachment capability on all sides
- Mounting brackets with strain relief
- Mounting brackets with profile rail
- KMA, pivoting
- KMA, locking
- Mounting bracket made of steel

Chainfix strain relief elements



- Improved housing foot clamp for easy fit into profile rail
- Integration with igus® KMA mounting brackets possible
- Clip-on tiwrap plates for opening crossbars
- Tiwrap plates with clip-on connection for the profile rail
- Chainfix clip - Modular snap-on for the profile rail

Guide troughs



- Aluminum SuperTrough – Basic
- Aluminum SuperTrough – Heavy-Duty
- Fixed end module, aluminum SuperTrough
- Steel guide troughs
- Fixed end module, steel guide trough
- For support of the lower run - Support Tray tool kit

1. Large unsupported length



Large unsupported length (+20% compared to E4/00) possible thanks to special stop dog, tongue and groove combination.

2. Rigidity for shear forces



Interlocking side link guarantees optimum lateral stability.

3. Side-mounted application



Also best suited for side-mounted applications due to tongue and groove design

4. Cable protection



Smooth, solid support for cables, many quickly mounted shelving options.

5. Low noise



Integrated "brake", smooth gliding surfaces; rubber dampers optional.

6. Straight run



High push-/pull forces through tongue and groove, no "camber" option by flipping the outer link.

For long travels

rol e-chain® – Special solution for long travels

The Heavy Duty chain family was developed for the following application areas:

- High cable loads
- High speeds
- Long travel lengths
- Extreme debris

The improved E4/4 Heavy Duty takes cable carrier stability to new levels.

Strength and cycle life are improved by significantly increased gliding and load bearing surfaces.

E4/4 Heavy Duty takes higher push/pull forces, at the same inner dimensions as regular E4/4 series.

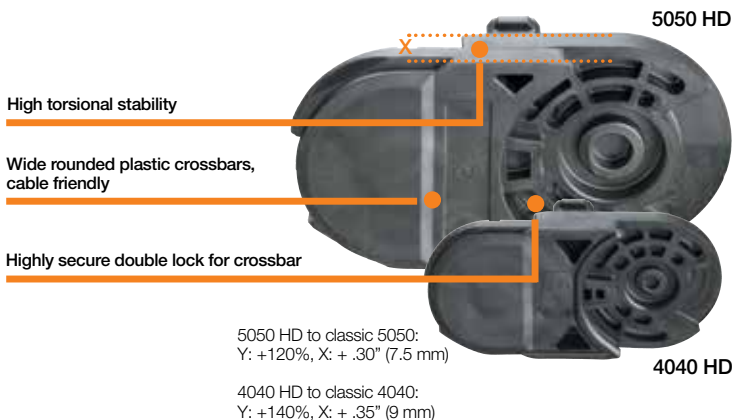
Supplied from stock for the HD series:

- Rollers reduce the push/pull forces
- Extension links for large widths and for increasing the load capacities
- Separators for the interior separation of the cable layout
- Mounting brackets for the mounting of the chain at the fixed and moving ends

Typical crane applications:
STS, Goliath cranes, Indoor
cranes, Bulk-handling cranes,
Mining cranes, ...



High additional loads



For long travels

rol e-chain® – Special solution for long travels



rol e-chain® – Rolling instead of gliding

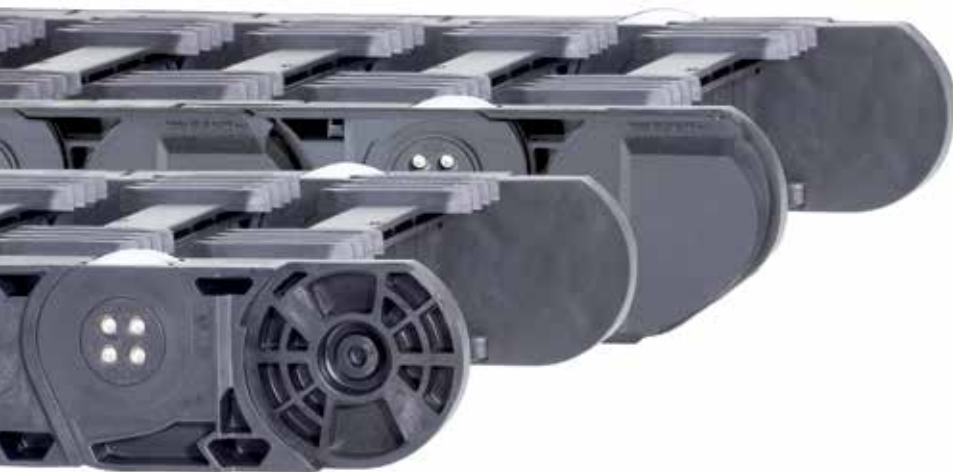
e-chains® are being used in ever longer travels. This has driven the development of the rol e-chain®. Additionally, movement speeds are increasing in combination with larger and larger fill weights up to 33.6 lbs/ft (50 kg/m).

- Reduces required drive power by up to 75% for moving the e-chain®
- Travels up to 2,625 ft (800 m) possible
- Speeds up to 19.69 ft/s (6 m/s) possible
- Various roller types for optimum application
- Can be used even in dirty environments
- Available as ready-to-fit, pre-harnessed system
- System guarantee for engineered systems



For very long travels and high speed

Large modular P4 system



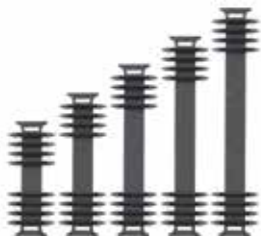
The igus® P4 roller-chains® are the best solution for the longest travel at high speeds. They are smooth running and energy-efficient – requirements that are demanded by many crane manufacturers today.

Standard roller-chain® has been used in over 1,000 installations worldwide. Some industries, including cranes, have increasing demands for length of travel, fill weight, and speed.

- Identical pitch of the chain link with or without roller
- Smooth, low noise operation through identical pitch length for links with and without rollers
- Integrated roller in the side link
- Long travels up to 2,625 ft (800 m), high additional loads up to 20.2 lbs/ft. (30 kg/m)
- For very long travels and high speeds > 32.8 ft/s (10 m/s) travel speed
- AUTO-GLIDE crossbars assist guiding in very long travels
- 4 different inner heights: 1.26" (32 mm), 1.65" (42 mm), 2.20" (56 mm) and 3.15" (80 mm) available
- Large modular accessory system with interior separations of the System E4



Save 57% energy with the aluminum guide trough



Additional widths

- System P4 in 5 widths
- 9.84", 11.81", 13.78" and 15.75" (250, 300, 350 and 400 mm) inner width
- Crossbars in cable friendly, rounded plastic
- Safe due to double lock mechanism



Extension link – heavy fill weights

- Roller extension link for series P4-56 and P4-80
- 50% higher fill weight possible
- Increased unsupported span
- Maximum rigidity
- Divides cross section into compartments (electric/hydraulic)

Technical data:

Modular P4 system for very long travels and high speed:

- 2,625 (800 m) travels and more are possible
- > 32.8 ft/s (10 m/s) speed
- Heavy fill weight up to 6.72 lbs/ft (10 kg/m)
- Large rolling and gliding surfaces for long cycle life
- Safely on track through AUTO-GLIDE cross bars and guide trough
- Same pitch for roller links/chain links

* A reduction of 3 dB(A) sounds like a 50 % reduction in the noise level to the human ear.



More bending radii

- System P4 in 3 bending radii: 250, 11.81" and 13.78" (300 and 350 mm)
- Large radii for stiff cables and hoses
- Small radii for limited space



Long-life rollers

- Tribo-optimized plastic rollers for all P4 systems
- Wear optimized
- Long cycle life
- Improved rolling
- Lower noise and vibration
- Same pitch for roller links/chain links



P4-32 with Aluminum guide trough

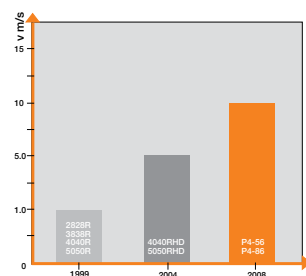
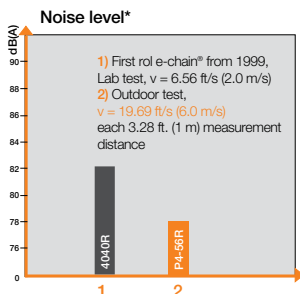
- Energy-efficient solution for long travels: -57%
- Highly dynamic even in cramped installations
- Very quiet, lightweight and slim design
- For fill weights up to 6.72 lbs/ft (10 kg/m)
- For long travels up to 2,625 ft. (800 m)
- No split roller, but as offset, runs smoothly



Standard guide trough system

- Guide trough system
- Special geometry in combination with AUTO-GLIDE cross bars allows for offset upper and lower run
- Strong installation kits for long life
- Stainless trough segments resist corrosion and sea water

Travel speed igus®rol e-chain®



Guide troughs

Safe guide for e-chains® on long travels



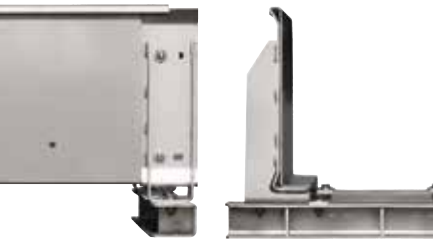
Trough without glide bars –
Chain glides on chain



Trough with glide bars –
Chain glides on glide bars



Center mounted – 1/2 Travel with glide
bars – 1/2 Travel without glide bars



HD-Installation set



igus® Guide Troughs

Guide troughs are used for long travels from 16.4 to 32.8 ft. (5 to 10 m) and more, depending on the chain type. They allow igus® e-chains® and E-Tubes to continue smooth, low-friction operation in these long-travel situations.

If the e-chains®/tubes are installed in the center of the travel (“center-mounted”), they glide on themselves for half the travel. For the other half, we recommend glide bars, which are assembled in the trough and on which the e-chains®/E-Tubes glide. igus® guide troughs are available from stock with these highly abrasion-resistant glide bars, which perform well with igus® e-chains® and E-Tubes regarding noise, abrasion and friction.

Type of Trough

igus® provides guide troughs made of

- Aluminum (seawater resistant according to EN6060)
- Stainless steel (1.4301 + 1.4571)
- Steel (zinc plated)

Trough assembly

If the igus® installation sets are used, the guide troughs are particularly easy to assemble. All the troughs are constructed according to the same basic principle. All sizes use a common profile rail on which the guide parts are assembled. The assembly brackets used vary in height only.

Typical crane applications:

STS, Goliath cranes, RMG's, Bulk-handling cranes

For heavy applications: HD-Installation set for joint and attachment surface connections secure connection without misalignment and without welding

Fixed end module for steel troughs

Until now, the steel trough had to be modified on site to fit the mounting brackets at the stationary end of the e-chain®. That is now history. With its prefabricated bore holes, the 78.7” (2,000 mm) long kit can be used for middle-feed, end-feed and opposed installation.

- Fast attachment of mounting brackets thanks to prefabricated bore holes
- Fast installation of profile rails for strain relief
- Fast bolting of glide bars

SuperTrough

A light version of long travel guides in aluminum



Aluminum Super Trough – Crane version

Lightweight guide troughs are available for the demanding crane industry with the Aluminum SuperTrough system. This trough system is designed with stronger installation brackets and add-ons including glide pads for protection against friction and wear, as well as silencer profiles to reduce the noise level of the e-chain system®

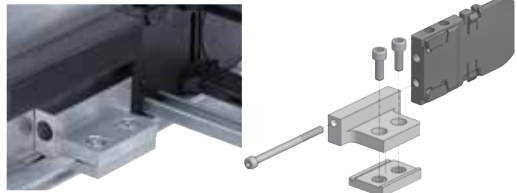
Modular Trough System

- Modular system with add-on accessories for heavy-duty applications
- Flexible assembly; connects to mounting surface, independent from profile length and location of trough section interfaces
- Various methods of fixation with installation brackets, slide on fasteners, and interface connectors
- Wear protective, side-mount glide bars available for high speed applications
- Resistance to corrosion caused by seawater
- Available for most series of igus® e-chains® series



Aluminum SuperTrough – installed on a RTG application

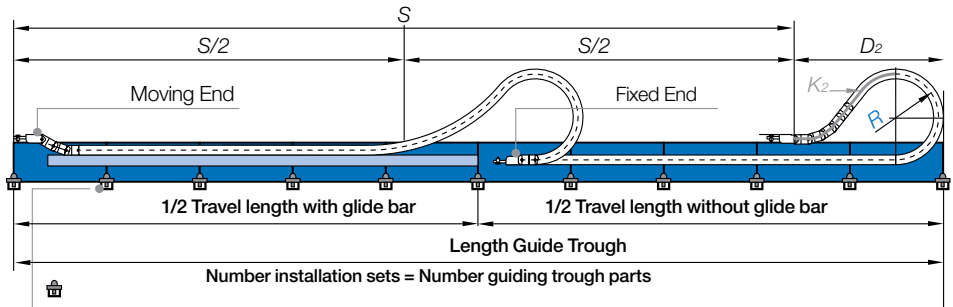
Seawater resistant according to EN 6060



Fixed end module for Aluminum SuperTrough

A quick fix for mounting the stationary end of an e-chain®, available for the Aluminum “SuperTrough”. Fast and easy mounting is possible with this module for the fixed end, with no drilling required without any drilling.

- Fast mounting of the e-chain®
- Quick relocation of the stationary end
- No drilling necessary



Schematic operating mode of an e-chain system® for long travel application with center-mount configuration. (Fixed end in the middle of the travel length)

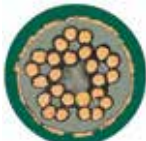
Cable design

More than 1,000 chainflex® cables from stock



More than 1,000 chainflex® cables developed especially for the use in e-chain systems®

- Wear resistant TPE, PUR and oil-resistant PVC outer jackets
- Halogen-free and/or flame-retardant materials
- Different certificates: UL, CSA, CE, DESINA, CEI
- Smallest radii up to 4 x d

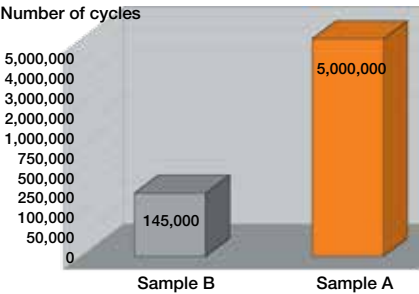


chainflex®
control cable



chainflex®
power cable

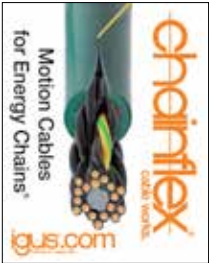
Tested, tested, tested.



Competitor: corkscrews after 145,000 cycles (Sample B)



igus® CF27: even after 5 million cycles no wear! (Sample A)



Order your personal
catalog:
www.igus.com/catalog

chainflex® for cranes

Overview of chainflex® cables for crane applications

Single conductor, CF330-D and CF340



The halogen-free single conductor for extra high mechanical demands on cranes and for plant engineering

- TPE UV-resistant outer jacket
- PVC-free/halogen-free

- Oil-resistant/Bio-oil-resistant
- Low-temperature-flexible
- Nominal voltage 0.6/1kV
- Bending radius inside e-chain®: 7.5 x d

Halogen-free power cables, CF37-D and CF38



The halogen-free power cable for extra high mechanical demands on cranes and for plant engineering

- TPE UV-resistant outer jacket, gusset filled extruded
- PVC-free/halogen-free

- Oil-resistant/Bio-oil-resistant
- Low-temperature-flexible
- Nominal voltage 0.6/1kV
- Bending radius inside e-chain®: 7.5 x d

Four conductor power cables, CF30, CF31, CF34-UL-D and CF35-UL



Shielded power cables for converter operation up to 600/1000 V and up to 70 mm².

Single conductor motor cables, - CF300-UL-D and CF310-UL



Shielded and unshielded single core motor cables for the most demanding requirements.

Fiber optic cables



Fiber glass (62.5/125 or 50/125), 2, 6 or 12 fibers – all fiber optic cables are tested for over several million flexing cycles.

Single conductor CF CRANE



Shielded highly flexible single core for up to 6/10kV. Medium voltage cable for the most demanding requirements in crane building, heavy machinery, etc. Cross sections: 1 x 25/16 to 1 x 95/16.

Data cables, CF211, CF240, CF11



chainflex® data cables are available for all continuous data systems for the e-chain® application. Also in big cross sections, for example 3 x 2 x 2.5 mm² or with voltage supply cores in a cable.

Control cables, CF5/CF6, CF9/CF10



PVC, PUR, TPE – A wide range to select from for all application areas – between shielded and unshielded cables and a large number of cross sections and number of cores.

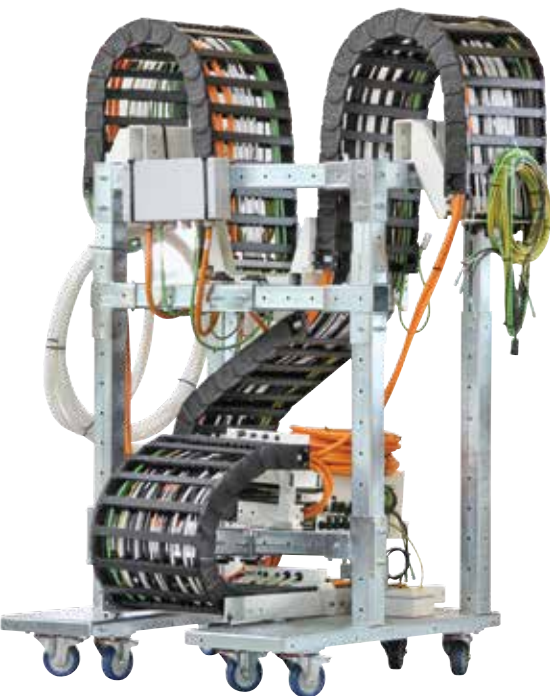
Harnessed e-chains®

readychain®: harnessed e-chain systems® in 3-10 days

700 systems per week in 11 readychain®-factories worldwide. Ask for fully harnessed assembly-time saving igus® readychains® to increase your cash-flow immediately-

- Harnessed systems within 3 to 10 days
- Eliminate storage costs for cables, e-chains® and connectors
- Shorten turnaround times by half
- Flexible response to order fluctuations
- Reduce the number of subcontractors and related orders by 75%
- Minimize your machine downtimes
- System guarantee – depending on your application

readychains® also available with assembly rack



Ready for filling. Harnessed systems up to 656 ft. (200 m) are possible.



readychain® installation by igus® supervisor on a bulk-handling crane. Weight of the e-chain® including chainflex® more than 2 tons.



Assembly-optimized delivery



Just in time supply

Safe operation

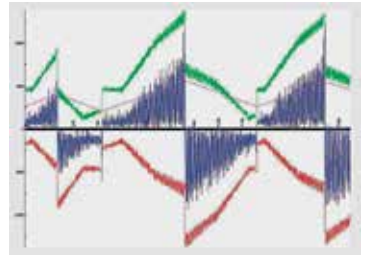
Push-Pull Force Detection System...Condition Monitoring

Benefits:

- Prevents down time
- Prevents damage to equipment
- Saves money
- Improves operational safety through preventative maintenance and fine tuning of the system

Full PPDS System

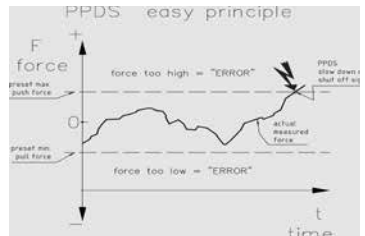
- **Data input**
Nominal/actual comparison of force value at the tow arm, measured 4 times per second, relative to the position of the e-chain system®.
- **Data exchange options**
Malfunction alerts as defined – through SMS, e-mail, fax. Remote data exchange, online or through e-mail.
- **Data log**
System data logout, retrospectively for up to 3 months, with a 128 MB memory chip. Alternatively incident-driven logout through modem memory.



PPDS – continuous real force measurement and position-sensitive analysis

Easy PPDS System

- **Low Cost Solution**
- **Data input:** Push/Pull forces with freely selectable parameters. Measurement of the actual force on moving end
- **Data exchange:** Emergency shut-down of the system in case of overstepping of optional limit values.
- **Data log:** Data log for up to 40,000 entries



Easy PPDS – continuous real force measurement and limit comparison.

“PPDS basic”

So far the realization of condition monitoring systems was limited to large-scale projects. Now PPDS basic makes this technology available for “standard” industrial appliances.

The simple force measuring function conducted at the mounting bracket of the e-chain® now also provides an emergency stop function for e-chains® in long stroke applications under 328 ft. (100 m) at a reasonable price.

- Low-cost system protection
- Emergency shutdown or alarming in case of system overload
- Space – saving design



Typical Crane applications:
STS, Goliath cranes, RMG's, Indoor cranes, Bulk-handling cranes

Customized

Necessary products for crane e-chain systems®



Floating moving arm on a STS crane for compensation of the lateral mismatch between trolley traveling path, crane traveling path and the readychains®. Optionally these may include push/pull force control detectors with permanent nominal to actual parameter checks and emergency stop functions.



Hinge point guide trough: Port cranes are equipped with a lifting boom. To make sure that the boom and the girder sides of the crane are connected without misalignment of the guide trough igus® has developed a special attachment for the swivel point. This means that the chain can run on top, beside, or below the crane girder.



Rise protection: readychains® operate safely on long travels and with high acceleration. The retention device prevents the readychains® from climbing when the crane accelerates.



Hinge clutch at the hinge point including limit switch for connection control.



igus® housing installed on main trolley for STS: igus® offers special customized housings for protection of the readychains® against severe weather conditions.

Safe on long travels

E-Rover: Safe data, operation, power, energy, CO₂



Automatically couple and de-couple RTGs with electricity and data:

The E-Rover from igus®

With the E-Rover, igus® has developed a system that automatically couples RTG cranes with an e-chain system® in an instant. Telescopic arm connects the energy-supply chain, which runs through a trough, with the RTG. This ensures a reliable energy supply and good data transmission – including via fiber optic cables.

- Reliable transmission of even fiber optic cable signals
- Reduces RTG operating costs
- Environmentally friendly
- Not sensitive to dirt
- Travels of 984 ft. (300 m) and more possible



Project engineering ...

Complete project service – from design to after sales service

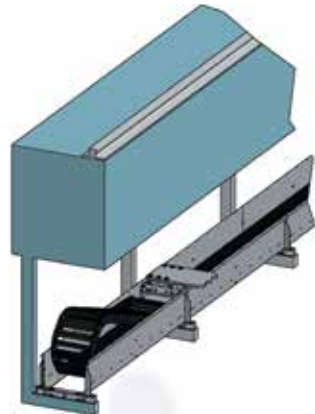


On-site support is part of the worldwide service and system guarantee

- Specific application solutions from igus® standard products to special designs
- Assistance from the layout up to the start of operations of every crane project
- After sales service in 48 countries, even after the end of the warranty
- All supplied components are available for a minimum of another 10 years after the delivery
- Supply of most parts from stock is guaranteed



igus® project drawings, developed in cooperation with the customer



Customized 3D sketch

including rotary systems



INNOVATION: Windmill installation vessel

Operation area: North Sea
Rotation angle: 900°
e-chains®: E4-56-60-200/6000-0
E4-56-60-300-6000-0
chainflex® cables: CF300, CF34, CF10 CFPE, CFLG, CFBUS
igus® has designed a customized rotary trough system for the Innovation and Vidar. Assembly and commissioning of both systems done at Crist Shipyard in Gdynia, Poland



Research and development



Better products for less - a key element is the industry's largest test lab. 18,840 ft² lab, more than 15,000 tests and 2 billion test cycles per year.

The igus® lab and field experience

Cutting costs while also guaranteeing maximum process reliability – only those who conduct intensive research and testing will successfully bridge this gap.

The industry's largest test lab conducts more than two billion test cycles per year on a total of 107 test rigs. This means they can be relied upon completely in the field.



Tribology testing in the plain bearing lab, igus® Cologne, Germany.

 www.igus.com/test

15,000 tests per year



igus® quality assurance

The igus® GmbH quality policy is based on the objective of identifying and meeting customer needs, and of always being a professional and reliable supplier. igus® has always been committed to producing products of the best possible quality and consistently developing innovative solutions.



Better for the environment

Because iglide® is free of external lubricants, no contaminants are discharged into the environment.

Additionally, the low weight of iglide® plastic plain bearings reduce power requirements, making them better for the environment.



Extensive test database

What is probably the world's largest database was created using the results of more than 15,000 tests run each year. This database gives us the ability to select the right product for your specific application.

e-chain® can be used on ...





Goliath Crane



E-Rover



Mounted Gantry (RMG)



Spreader



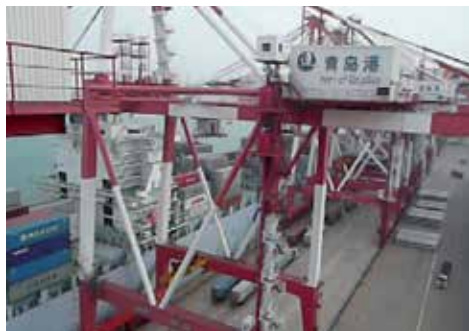
Ship-to-Shore Crane (STS)



Reach Stacker

STS cranes...

igus® e-chain systems® in crane applications...worldwide



STS Crane

Travel	393.7 ft. (120 m)
Speed	max. 13.1 ft/s (4 m/s)
Acceleration max.	1.64 ft/sec ² (0.5 m/sec ²)
e-chain®	P4-56-20-300-S40-0-AG
chainflex® Types	CF300 / CF10 / CF9 / CFLG
Location	China
More references	Europe
Running since	2009



STS Crane

Travel	327.4 ft. (99.8 m)
Speed max.	11.5 ft/min. (3.5 m/min.)
Acceleration max.	2.62 ft/sec ² (0.8 m/sec ²)
e-chain®	4040CR-15-200-S10-0-E
Location	Europe
More references	Worldwide
Running since	2009



STS Crane

Travel	388.8 ft. (118.5 m)
Speed max.	689 ft/min (210 m/min)
e-chain®	4040CR-22-250-0
chainflex® Types	CF300/CF9/CF10/CFLG
Location	Europe
More references	Worldwide
Running since	2003



Double Trolley Container Crane

Travel	157.5 ft. (48 m)
Speed max.	590.5 ft/min (180 m/min)
Acceleration max.	1.64 ft/sec ² (0.5 m/sec ²)
Cable weight	40 kg/m
e-chain®	5050R-12/10/12-300-0
chainflex® Types	CF300 / CF9 / CF12 / CFLG / CF KOAX 1
Location	Europe
More references	Worldwide
Running since	1999

RTG...RMG...

igus® e-chain systems® in crane applications...worldwide



Container RMG

Travel	370.8 ft. (113 m)
Speed max.	8.20 ft/s (2.5 m/s)
Acceleration max.	1.64 ft/sec ² (0.5 m/sec ²)

e-chain®	P4-56-20-300-S40-0-AG
chainflex® Types	CF300, CF330, CF9, CFLG
Location	Germany
More references	Asia
Running since	2009



RTG

Travel	64 ft. (19.5 m)
Speed max.	196.9 ft/min (60 m/min)
Acceleration max.	1.31 ft/sec ² (0.4 m/sec ²)

e-chain®	400-25-250-0
chainflex® Types	CF300 / CF34 / CF9 / CF11
Location	Panama
More references	Worldwide
Running since	2000



RMG

Travel	226.4 ft. (69 m)
Speed max.	3.94 ft/min (120 m/min)
Acceleration max.	1.31 ft/sec ² (0.4 m/sec ²)

e-chain®	4040R-31-250-0
Location	Europe
More references	Worldwide
Running since	2001



RTG

Travel	65.6 ft. (20 m)
Speed max.	196.9 ft/min (60 m/min)
Acceleration max.	1.31 ft/sec ² (0.4 m/sec ²)

Cable weight	9.8 kg/m
e-chain®	4040-46-300-0
chainflex® Types	CF34 / CF9 / CF11 / CFLG
Location	Russia
More references	Worldwide
Running since	2003

Goliath...Spreader...

igus® e-chain systems® in crane applications...worldwide



Goliath crane

Travel	639.8 ft. (195 m)
Speed max.	131.2 ft/min (40 m/min)
Acceleration max.	.33 ft/sec ² (0.1 m/sec ²)
e-chain®	5050R-40-250-0
chainflex® Types	CF300 / CF9 / CF11
Location	Asia
More references	USA
Running since	2001



Goliath crane

Travel	403.6 ft. (123 m)
Speed max.	131.2 ft/min (40 m/min)
Acceleration max.	1.64 ft/sec ² (0.5 m/sec ²)
e-chain®	40-15/15-250-0
Location	Asia
More references	USA
Running since	1997



Spreader

Travel	27.6 ft. (8.4 m)
Speed max.	59.1 ft/min (18 m/min)
Acceleration max.	.33 ft/sec ² (0.1 m/sec ²)
e-chain®	3838-07-150-0
Location	Asia
More references	Worldwide
Running since	1998



Spreader

Travel	27.6 ft. (8.4 m)
Speed max.	49.2 ft/min (15 m/min.)
Acceleration max.	.33 ft/sec ² (0.1 m/sec ²)
e-chain®	3838-10-125-0
Location	Asia
More references	Worldwide
Running since	1998

Reach stacker...

igus® e-chain systems® in crane applications...worldwide



Reach stacker

Travel 25.6 ft. (7.8 m)
Speed max. 49.2 ft/min (15 m/min)
Acceleration max. .82 ft/sec² (0.25 m/sec²)
e-chain® 4040-15-250-0

Location Europe
More references Worldwide
Running since 2004



Reach stacker

Travel 23.6 ft (7.2 m)
Speed max. 1.64 ft/min (0.5 m/min)
Acceleration max. .82 ft/sec² (0.25 m/sec²)
e-chain® 5050-25-250-0

Location Europe
More references Worldwide
Running since 2000



Reach stacker (cabin movement)

Travel 72.2 ft. (22 m)
Speed max. 49.2 ft/min (15 m/min)
Acceleration max. .82 ft/sec² (0.25 m/sec²)
e-chain® 3838-20-150-0

Location Europe
More references Worldwide



Reach stacker

Travel 24.9 ft. (7.6 m)
Speed max. 49.2 ft/min (15 m/min.)
Acceleration max. .66 ft/sec² (0.2 m/sec²)
e-chain® E4-56-15-200-0

Location Asia
More references Worldwide
Running since 2008

Indoor cranes...

igus® e-chain systems® in crane applications...worldwide



Bulk-handling crane

Travel	525 ft. (160 m)
Speed max.	65.6 ft/min (20 m/min)
Acceleration max.	1.64 ft/sec ² (0.5 m/sec ²)
e-chain®	4140-22-250-0
chainflex® Types	CF30 / CF7 / CF11
Location	Europe
More references	Europe
Running since	1998



Grab crane

Travel	93.8 ft. (28.6 m)
Speed max.	262.5 ft/min (80 m/min)
Acceleration max.	.98 ft/sec ² (0.3 m/sec ²)
e-chain®	400-25-300-0
chainflex® Types	CF30 / CF31
Location	Europe
More references	Worldwide
Running since	2000



Indoor crane

Travel	118.1 ft. (36 m)
Speed max.	229.7 ft/min (70 m/min)
Acceleration max.	1.64 ft/sec ² (0.5 m/sec ²)
e-chain®	290-17-200-0
chainflex® Types	CF31 / CF6 / CF11
Location	Europe
More references	Worldwide
Running since	1997



Steelcoil transport crane

Travel	124.7 ft. (38 m)
Speed max.	164 ft/min (50 m/min)
Acceleration max.	1.64 ft/sec ² (0.5 m/sec ²)
e-chain®	3838-25-250-0
chainflex® Types	CF31 / CF130 / CF11 / CFBUS
Location	Germany
More references	Worldwide

Heavy duty...

igus® e-chain systems® in crane applications...worldwide



Gantry crane

Travel	65.6 ft. (20 m)
Speed max.	3.28 ft/min (1 m/min)
Acceleration max.	3.28 ft/sec ² (1 m/sec ²)
e-chain®	5050-40-200-0
chainflex® Types	CF9
Location	Europe
More references	Europe
Running since	2004



Grab crane

Travel	69.9 ft. (21.3 m) (Trolley) 170.6 ft. (52 m) (Crane)
Speed max.	4.36 ft/s (1.33 m/s)
Acceleration max.	.82 ft/sec ² (0.25 m/sec ²)
e-chain®	5050R-27-300-S10-0 5050R-35-350-S10-0
chainflex® Types	CF5 / CF6 / CF30
Location	Europe
More references	Europe
running since	2003



Mining crane

Travel	32.8 ft. (10 m)
Speed max.	.33 ft/s (0.1 m/s)
Acceleration max.	1.64 ft/sec ² (0.5 m/sec ²)
e-chain®	600-35-300/4650-0
chainflex® Types	Power-, data- and control cables
Location	Europe
More references	Europe
Running since	2001



Waste crane

Travel	70.5 ft. (21.5 m) (Trolley) 170.6 ft. (52 m) (Crane)
Speed max.	4.36 ft/s (1.33 m/s)
Acceleration max.	3.28 ft/sec ² (1 m/sec ²)
e-chain®	5050R-35-350-S10-0-E 5050R-27-350-S10-0-E
Location	Austria
More references	Europe

Bulk-handling...

igus® e-chain systems® in crane applications...worldwide



Bulk-handling crane

Travel	869. ft. (26.5 m)
Speed max.	3.28 ft/s (1 m/s)
Acceleration max.	1.64 ft/sec ² (0.5 m/sec ²)

e-chain®	4040CR-18-200-0
chainflex® Types	CF9 / CFBUS / CF300
Location	Germany
More references	Europe
Running since	2009



Straddle carrier

Travel	42.7 ft. (13 m) vertical
Speed max.	6.56 ft/s (2 m/s)
Acceleration	max. 3.28 ft/sec ² (1 m/sec ²)

e-chain®	5050C-15-250-0
chainflex® Types	CF9, additional hydraulic hoses
Location	Worldwide
More references	Worldwide
Running since	2006



Bulk-handling crane trolley travel

Travel	735 ft. (224 m)
Speed max.	131.2 ft/min (40 m/min.)
Acceleration max.	.66 ft/sec ² (0.2 m/sec ²)

e-chain®	4040CR-22-300-0
chainflex® Types	CF11 / CF9 / CF34
Location	China
More references	Worldwide



Bulk-handling quay travel

Travel	639.8 ft. (195 m)
Speed max.	65.6 ft/min (20 m/min.)
Acceleration max.	.66 ft/sec ² (0.2 m/sec ²)

e-chain®	5050CR-35-300-0
chainflex® Types	CF300 / CF9 / CF11
Location	Germany
More references	Europe, Asia

More references...

igus® e-chain systems® in crane applications...worldwide



Ship-unloader crane

Travel	1446.9 ft. (441 m)
Speed max.	98.4 ft/min (30 m/min)
Acceleration max.	.33 ft/sec ² (0.1 m/sec ²)
e-chain®	5050R-28-300-0
chainflex® Types	CFCRANE
Location	Asia
More references	Europe, Canada
Running since	2002



Ship-unloader crane

Travel	347.8 ft. (106 m)
Speed max.	787.4 ft/min (240 m/min)
Acceleration max.	1.97 ft/sec ² (0.6 m/sec ²)
e-chain®	5050RHD-12/15/12-300-0
Location	Europe
More references	Worldwide
Running since	2004



Ship-unloader Crane

Travel	497.1 ft. (151.5 m)
Speed max.	984.3 ft/min (300 m/min.)
Acceleration max.	1.64 ft/sec ² (0.5 m/sec ²)
e-chain®	4040CR-15-250-0
chainflex® Types	CF12 / CF11 / CF9
Location	Canada
More references	Europe, Asia
Running since	1998



Container crane

Travel	257.6 ft. (78.5 m)
Speed max.	393.7 ft/min (120 m/min)
Acceleration max.	1.64 ft/sec ² (0.5 m/sec ²)
Cycles/year	42.000
e-chain®	5050R-27-250-0
chainflex® Types	CF300 / CF11 / CF9
Location	Europe
More references	Worldwide
Running since	1999

More references...

igus® e-chain systems® in crane applications...worldwide



Grab crane

Travel	377.3 ft. (115 m)
Speed max.	541.4 ft/min (165 m/min)
Acceleration max.	2.3 ft/sec ² (0.7 m/sec ²)
e-chain®	5050RHD-30-300-S10-0-E
Location	Europe
More references	Worldwide
Running since	2007



STS crane

Travel	65.6 ft. (20 m)
Speed max.	3.28 ft/min (1 m/min.)
Acceleration max.	< 1.64 ft/sec ² (0.5 m/sec ²)
e-chain®	5050HD-25/25-500-0
chainflex® Types	CF300 / CF9 / CF10 / CF11
Location	USA
More references	Worldwide
Running since	2009



STS crane, low profile

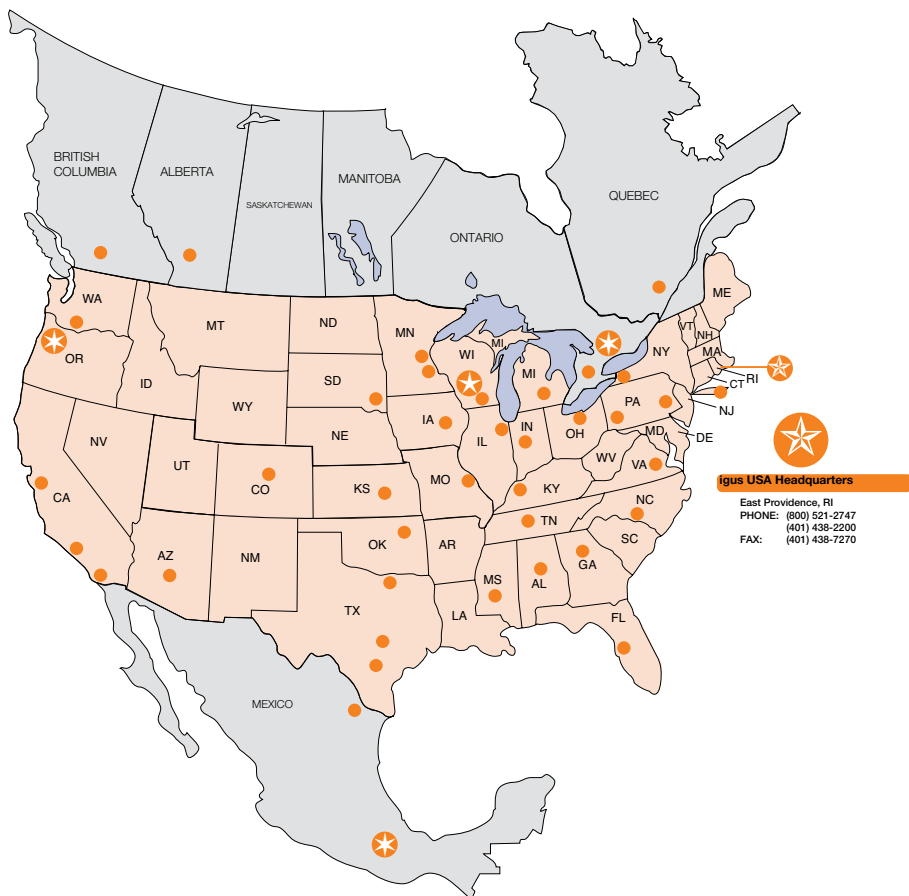
Travel	269.0 ft. (82 m)
Speed max.	11.5 ft/s (3.5 m/s)
Acceleration max.	1.90 ft/sec ² (0.58 m/sec ²)
e-chain®	3838CR-20-200-S10-0-E
chainflex® Types	CF300 / CF10 / CF9 / CFLG
Location	Europe
More references	Worldwide
Running since	2007



STS crane

Travel	301.9 ft. (92 m)
Speed max.	590.6 ft/min (180 m/min.)
e-chain®	4040CR-12-200
chainflex® Types	CF9 / CF37 CF10 / CF11
Location	Poland
More references	Worldwide

igus® North America



North American District Offices



igus® CANADA

Concord, ONT
 PHONE: (800) 965-2496
 (905) 760-8448
 FAX: (905) 760-8688



igus® WISCONSIN

Sussex, WI
 PHONE: (888) 803-7235
 (262) 246-0682
 FAX: (262) 246-0689



igus® MEXICO

Toluca, MX
 PHONE: (728) 284-3185
 FAX: (728) 284-3187



igus® OREGON

Portland, OR
 PHONE: (888) 803-7237
 (503) 282-1952
 FAX: (503) 282-5976

Visit www.igus.com
 for a complete list of our regional offices

igus® contacts ...



46 Poland

igus® Sp. z o.o.
Dziękowa 12/12 Street
02-234 Warsaw
Phone +48 22 9535770
Fax +48 22 9636169
info@igus.pl

47 Portugal

igus® Lda.
R. Eng. Ezequiel Campos,
239
4100-231 Porto
Phone +351 22 6109000
Fax +351 22 8328321
info@igus.pt

48 Romania

TechCon Industry SRL
Calea Orăștiei nr. 60
060345 București
Phone +40 21 2219-640
Fax +40 21 2219-756
automatizari@meleco.ro

48 Romania

Hennlich SRL
Str. Pășii, Nr.17
310106 Arad
Phone +40 257 211119
Fax +40 257 211021
igus@hennlich.ro

49 Russia

OOO igus®
40/22, Nikolayevskaya st.,
bldg. 4, office 509-510
Moscow, 109004
info@igus.ru

49 Russia

OOO Hennlich
Oermaja 16
building 1, office 4
170008 Tyer
Phone +7 4822 787 180
Fax +7 4822 830 180
hennlich@hennlich.ru

50 Saudi Arabia

AFI
Khalaf Bin Hesham Street
Box 9998
31423 Dammam
Phone +966 38740033
Fax +966 38470077
marketing@afi.com.sa

51 Serbia + Montenegro

Hennlich d.o.o. Beograd
Radomira Markovica 1/3
11222 Beograd / Srbija
Phone +381 11 63 098 17
Fax +381 11 63 098 20
office@hennlich.rs

52 Singapore-ASEAN HQ

igus® Singapore Pte Ltd
15 Shaw Road, #03-02
Singapore 367953
Phone +65 6487-3411
Fax +65 6487-1511
info@igus.com.sg

53 Slovakia

igus® Slovakia s.r.o.
Fabričná 3
849 01 Nitra
Slovakia
Mob. +421 949 459 409
info@igus.sk

53 Slovakia

Hennlich s.r.o.
Račianska 188
SK-831 63 Bratislava
Phone +421 2 50202504
+421 2 50202505
Fax +421 2 50202520
litech@hennlich.sk

54 Slovenia

igus® d.o.o.
Izalska c. 134
1000 Ljubljana
Slovenia
Mob. +386 (0)30 601 610
info@igus.si

54 Slovenia

Hennlich, d.o.o.
Industrijska tehnika
Podnart 33
SI-4244 Podnart
Phone +386 4 53206-10
Fax +386 4 53206-20
info@hennlich.si

55 South Africa

igus® Pty. Ltd.
Unit 29
Midline Business Park
Cnr Le Roux & Richards Drive
Midrand 1662
Phone +27 11312-1848
Fax +27 11312-1694
sales.za@igus.de

58 South Korea

igus® Korea Co. Ltd.
613-14 Namchondong,
Namdonggu
Incheon City, 405-846
Phone +82 32 82129-11
Fax +82 32 82129-13
info@igus.kr

57 Spain

igus® S.L.
C/ Libertad, 6
Polígono Nal del Suco
08340 Viladecans - BCN
Phone +34 936 473950
Fax +34 936 473951
igus.es@igus.es

58 Sweden

igus® ab
Knut Pålss väg 8
256 69 Helsingborg
Phone +46 42 323270
Fax +46 42 211585
info@igus.se

58 Sweden - e-chains®

OEM Automatic AB
Box 1011 Dalagatan 4
573 28 Tranås
Phone +46 75 2424100
Fax +46 75 2424159
info@aut.oem.se

58 Sweden - plain bearings

Colly Components AB
P.O. Box 76
664 94 Kista
Phone +46 8 7030100
Fax +46 8 7039841
info@colly.se

58 Switzerland

igus® Schweiz GmbH
Winkstr. 5
4022 Egerkingen
Phone +41 62 3889707
Fax +41 62 3889799
info@igus.ch

60 Syria

ETTA Systems
Al-Hanna St. Shaban Building
12850 Damascus
Phone +96 311 332 5519
Fax +96 311 334 2639
info@ettasystems.com

61 Taiwan

igus® Taiwan Company Ltd.
5F, No. 35, 24th Road
Taichung Industrial Park
Taichung 40850
Phone +886 4 2358-1000
Fax +886 4 2358-1100
info@igus.com.tw

62 Thailand

igus® Thailand Co., Ltd
10 Floor, Unit C1
Tharapoom Tower
1550 New Petchaburi Road
Mekasorn Rattawit
Bangkok 10400 Thailand
Ph. Fax +66 632 652 7325
info@igus.co.th

62 Thailand

Autoflexible Advanced Engineering Co., Ltd.
111 Soi, Sukhumvit,
62/1 Sukhumvit Rd.
Bangkok, Phrakong
Bangkok 10260
Phone +66 2 3112111
Fax +66 2 3327900
info@igus.th

63 Tunisia

BOUDRANT
53, Avenue de Carthage
1000 Tunis - Tunisia
Phone +216 71340244
Fax +216 71348910
info@boudrant.com.tn

64 Turkey

HIDREL Hidrolik Elemanlar
Sarıyeri ve Tıclart A.S.
Percemli Sk. No. 7
Tınel Mevki
34420 Kağıthane / Istanbul
Phone +90 212 2404881
Fax +90 212 2920850
info@hidrel.com.tr

65 United Arab Emirates

Unigrup (FZE)
1st floor Rasana
Building M602
Sharjah Intern. Airport Freezone
P.O. Box 120900
Sharjah - UAE
Phone +971 6 5578396
Fax +971 6 5578397
automat@unigrup.ae

65 United Arab Emirates

Power & Technology Trading Co. LLC
P.O. Box 33372 SHJ
Sharjah - UAE
Phone +971 6 5421300
Fax +971 6 5423790
sales@powertech.ae

66 United Kingdom

igus®
Casswell Rd
Northampton NN4 7PW
Phone +44 1604 677240
Fax +44 1604 677242
sales@igus.co.uk

67 Ukraine

Cominpro Ltd.
Homena Roliara 12,
Office 220
61058 Kharkov
Phone +38 0577174914
Fax +38 0577174914
cominpro@gmail.com

67 Ukraine

Hennlich Ukraine LLC (HQ)
Kramatorska Street 15
84100 Sloviansk City,
Donetsky Region
Phone +38 06252 33540
hennlich@hennlich.com.ua

68 Uruguay

Larrique Rulemanes SA
Galicia 1204
Montevideo-Uruguay
Phone +598 29021773
Fax +598 29084824
larrique@larrique.com.uy

69 USA

igus® Inc.
P.O. Box 14349
East Providence
RI 02914
Phone +1 401 4382200
Fax +1 401 4387270
w@master@igus.com

70 Venezuela

Neumatica Rotonda C.A.
Prófugo Av. Michellena
C.C. Altas Locales B-10 y
B-11
Valencia, Edo. Carabobo
Phone +58 241 832.64.64
+58 241 832.32.50
+58 241 838.88.19
Fax +58 241 832.62.83
ventas@neumaticar.com

71 Vietnam

igus® Singapore Pte Ltd
The Representative Office in HCMC
Center Tower
Unit 028, 4th Floor
72-74 Nguyen Thi Minh Khai
Street, District 3,
Ho Chi Minh City, Vietnam
Phone +84 8 6299 9197
Fax +84 8 6299 9195
info@igus.vn

igus® worldwide

igus® offices

igus® distributors

1 Germany

igus® GmbH
Spicher Str. 1a
51147 Köln
P.O. Box 90 61 23
51127 Köln
Phone +49 2203 9649-9
Fax +49 2203 9649-222
info@igus.de, www.igus.de

2 Argentina

Borintech SRL
Av. Elcano 4971
C4427CH Buenos Aires
Phone +54 11 4556 1000
Fax +54 11 4556 1000
igus@borintech.com

3 Australia

Treotham Automation Pty. Ltd.
14 Sydney Road
Brookvale NSW 2100
Phone +61 2 9907-1768
Fax +61 2 9907-1778
info@treotham.com.au

4 Austria

igus® polymer Innovations GmbH
Ort 55
4843 Ampfing
Phone +43 7675 4005-0
Fax +43 7675 3203
igus-austria@igus.at

5 Belarus

SODO Hennich
Kharkovskaya Str. 90-8
Minsk, 220015
Phone +375 17 207-1826
Fax +375 17 207-3971
info@hennich.by

6 Belgium/Luxembourg

igus® B.V.B.A.
Kolonal Beguittaan 75
3012 Willese
Phone +32 16 314431
Fax +32 16 314439
info@igus.be

7 Bosnia & Herzegovina

Hennich d.o.o.
Dormala Bjelečka 185
Avaz Business Center
71000 Sarajevo
Phone +387 33 45 14 39
Fax +387 33 45 14 39
info@hennich.ba

8 Brazil

igus® do Brasil Ltda.
Avenida Marginal Norte da
via Anhanguera 53.780
Vila Ram - Jundiaí
CEP 13206-245 - SP
Phone +55 11 3531-44 87
Fax +55 11 3531-44 88
vendas@igus.com.br

9 Bulgaria

igus® EOOD
2, Lul Avar str., fl. 4, of. 4
1404 Sofia, Bulgaria
Phone +359 2 850 8409
Fax +359 2 850 8409
info@igus.bg

9 Bulgaria

Hennich OOD, BG
4003 Plovdiv, Bulgaria
147A, Brezovska shose Str.,
Rota center, fl. 3
Phone +359 32 621 526
Fax +359 32 621 929
office@hennich.bg

10 Canada

igus® Office Canada
201 Millway Ave.
UNIT 25
Concord
Ontario L4K 5K8
Phone +1 905 7808448
Fax +1 905 7808688
webmaster@igus.com

11 Chile

Vendortec
San Martin # 2097
Maipo - Santiago
Phone +56 2 7106825
ventas@vendortec.cl

12 China

igus® Shanghai Co., Ltd.
No.46 Warehouse,
11 Deba Road, WGO FTZ,
Shanghai 200131,
P.R.China
Phone +86 21 51303100
Fax +86 21 51303200
master@igus.com.cn

13 Colombia

Colsein Ltda
Parque Industrial Gran
Sabana
Edificio / Building 32
Tocancipá, CUN 251017
Phone +57 1-519-0967
info@colsein.com.co

14 Costa Rica

Enesa Equipos Neumáticos S.A.
Del Colegio Marista
100 este, 200 sur, 25 este
Urbanización Chiriquí
Alajuela, Costa Rica
Phone +506 2440-2393
Fax +506 2440-2393
equiposneumaticos@enesa.net

15 Croatia

igus® d.o.o.
Ventilatorska 9
10250 Lučko Zagreb
Croatia
info@igus.hr

15 Croatia

Hennich, Industrijska d.o.o.
Stupničkobrelka 17
Stupnički Obraz
10255 Gornji Stupnik
Phone +385 1 3874334
Fax +385 1 3874336
hennich@hennich.hr

16 Czech Republic

HENNICH s.r.o.
Československá 9
412 01 Lhota u Brna
Phone +420 416 7113-32
Fax +420 416 7113-39
info@hennich.cz

17 Denmark

igus® ApS
Postboks 243
8800 Viborg
Phone +45 86 603373
Fax +45 86 603273
info@igus.dk

17 Denmark - e-chains®

Solar A/S
Industrivej Vest 43
6800 Vejen
Phone +45 76 961200
Fax +45 76 36 4759
solar@solar.dk

18 Ecuador

Ecuainetec
El Zumbado E9-32 y el Vanguard
Quito
Phone +593 2 2253757
Fax +593 2 2461833
info@ecuainetec.com.ec

19 Egypt

Fedcom Trading
Mohamed Fayed Sami & Co.
12, El Mahad El Swissi St.,
Flas 10 - 2nd Floor-Zamalek
Cairo - A.R. of Egypt
Phone +202 27362637
Fax +202 27363196
mohamed.fayed@fedcom.com

19 Egypt

IEE International Company for Electrical Engineering
2nd floor, 25 Orabi St
Down Town, Cairo
Phone +202 25767370
Fax +202 25767375
kamel@iee-egypt.com

20 Estonia

igus® OÜ
Lõtsa 44
Tallinn 11415
Phone +372 667 5600
Fax +372 667 5601
info@igus.ee

21 Finland

SKS Mekaniikka Oy
Martinkyläntie 50
01720 Vantaa
Phone +358 20 7846522
Fax +358 20 7846824
mekanika@sk.fi

21 Finland - chainflex®

SKS Automaatio Oy
Martinkyläntie 50
01720 Vantaa
Phone +358 20 7846748
Fax +358 20 7846820
automaatio@sk.fi

22 France

igus® SARL
49, avenue des Pipinières
Pars Médicis
94260 Fresnes
Phone +33 1 49840404
Fax +33 1 49840394
info@igus.fr

23 Greece - e-chains®

Chrismotor s.a.
71, Sp. Patsi str.
118 55 Athens
Phone +30 210 34 26574
Fax +30 210 3425595
info@chrismotor.gr

23 Greece - Plain bearings

J. & E. Papadopoulos S.A.
12 Poldikou str
Piraeus, 185 40
Phone +30 210 4113133
Fax +30 210 4116781
sales@papadopoulos-sa.com

24 Hong Kong

Sky Top Enterprises Ltd.
Room 1707, Block C, Wah Tat
Ind Centre, Wah Sing Street,
Kwai Chung, Hong Kong
Phone +852 23434278
Fax +852 23434279
skytop@cti.hk

25 Hungary

igus® Hungaria Kft.
Ipari Park u.10,
1044 Budapest
Phone +36 1 3086486
Fax +36 1 4310374
info@igus.hu

26 Hungary

Tech-Con Kft.
Vérsó utca 9-11
1133 Budapest
Phone +36 1 4124161
Fax +36 1 412 4171
tech-con@tech-con.hu

26 India

igus® (India) Pvt. Ltd.
36/1, Sy No. 17/3
Euro School Road,
Doddla Nekkundi Industrial
Area, - 2nd Stage
Mahadevapura Post
Bangalore 560048
Phone +91 80 45127800
Fax +91 80 45127802
info@igus.in

27 Indonesia

PT igus® Indonesia
Garma Center Subor 8040-6050
Jalan Kapten Subjanto Dj.
BSD City
Tangerang 15321
Phone +62 21 537 61 83 / 84
info@igus.co.id

28 Iran

Tameen Ehtiajati Fani
Tehran (TAP CO.)
62, Farshar Ave., Unit 5
15816 Tehran, Iran
Phone +98-21-8831 78 512
Fax +98-21-8882 02 68
info@tapi-co.com

29 Ireland

igus® Ireland
Caswell Rd
Northampton NN4 7PW
Phone +44-1604 677240
Fax +44-1604 677242
sales@igus.ie

30 Israel

Conlog LTD
P.O. Box 3205
17 Herzliah St.
Industrial Zone Kiyat Arze
Petach-Tikva 49130
Phone +972 3 9269695
Fax +972 3 9263367
conlog@conlog.co.il

31 Italy

igus® S.r.l.
Via delle Rovinate, 4
23899 Robbiate (LC)
Phone +39 039 5906.1
Fax +39 039 5906.222
igustalia@igus.it

32 Japan

igus® k.k.
Arcacental 15F, 1-2-1 Kishi,
Sumida-ku Tokyo JAPAN
Zip 130-0013
Phone +81 358 192030
Fax +81 358 192055
info@igus.co.jp

33 Jordan

Al Hazzam Adtech
Abu Alanda Street, Building No. 1
Amman
Phone +962 64 170100
Fax +962 64 169993
info.jod@adtech-trading.com

34 Latvia

igus® OÜ
Lõtsa 4A
Tallinn 11415
Phone +372 667 5600
Fax +372 667 5601
info@igus.ee

35 Lebanon

Mecanix Shops
Gobran Sal
Charles Helou Avenue
Beirut
Phone +961 1 486701
Fax +961 1 490929
mecanix@dn.net.lb

36 Lithuania

Hitech UAB
Terminalo g. 3
54469 Bliuškiai k. (Kauno LEZ)
Kauno raj.
Phone +370 37 323271
Fax +370 37 323273
info@hitech.lt

37 Macedonia, Albania, Kosovo

Hennich DOOEL
Boris Kidric 88
Zip: 1200, Tetovo MK
Phone +389 44614411
Mob. +389 76 200 770
drian.igus@hennich.mk

38 Malaysia

igus® Malaysia Sdn Bhd
No. 19-1, Jalan PUIJ 1/3F
Surway Mas Commercial
47301 Petaling Jaya
Selangor D.E.
Phone +603 7880 5475
Fax +603 7880 5479
info@igus.my

39 Morocco

AFIT
5, Rue Amir Abdelkader
20300 Casablanca
Phone +212 522 633769
Fax +212 522 618351
soula.vu@premium.net.ma

40 Mexico

igus® Mexico S. de RL de CV
Boulevard Aeropuerto Miguel
Alejandre 160 Int. 135
Cd. Condesa Industrial Toluca Lerma
Lerma, Estado de Mexico C.P. 50004
Phone +52 728284 3185
Fax +52 728284 3187
mexico@igus.com

41 Netherlands

igus® B.V.
Stierengweg 9
3769 BS Soesterberg
Phone +31 346 353912
Fax +31 346 353849
igus.nl@igus.de

41 Netherlands - Plain bearings

Elsce Holland BV
Kamerlingh Onnesweg 28
NL-3316 GL Dordrecht
Phone +31 78 6544777
Fax +31 78 6544793
info@elsce.nl

42 New Zealand

Automation Equipment Ltd.
26 Tawm Place
PO Box 5656
Hamilton
Phone +64 7 8490281
Fax +64 7 8490242
sales@autoequip.co.nz

43 Norway

ASI Automatik AS
Ingv. Ludvigssensgate 23
3007 Drammen
Phone +47 9006 1100
info@asif.no

44 Peru

Profaco S.A.C.
Calle Bolívar 389 of. 203
Miraflores
Lima 18 - Perú
Phone +51 1 2414370
Fax +51 1 2428608
ventas@profaco.com

45 Philippines

Silicon Exponents Corp.
Suite 6A, 8414 D. A. Santos
Ave., Sucat, 1700 Parañaque
City
Rizal/Manila
Phone +63 2 8250126
Fax +63 2 8250141
info_philippines@igus.com.sg

9001:2008

igus® is certified in accordance with ISO 9001:2008 and ISO/TS 16949:2009 in the field of energy supply systems, cables and harnessing, as well as plastic bearings.



igus® Inc.
PO Box 14349
East Providence, RI 02914
Tel: 800-521-2747
Fax: 401-438-7270
E-mail: sales@igus.com
www.igus.com

